

# STRATEGIC OPERATIONS



MEDICAL PRODUCTS & SERVICES



[www.strategic-operations.com](http://www.strategic-operations.com)

## MEDICAL PRODUCT CATALOG



# STRATEGIC OPERATIONS



MEDICAL PRODUCTS & SERVICES  
www.strategic-operations.com

Strategic Operations Inc. is dedicated and focused on maximizing training value by outfitting medical providers with essential training devices to accomplish lifesaving goals. The cost of these medical training devices are extremely competitive. By combining multiple partial task training objectives into one device, the need for multiple trainers is eliminated. By designing medical simulation and training devices that are user-repairable: usage and cost effectiveness are maximized while minimizing out of service time for proprietary manufacturer repairs and costly expendable replacement supplies.

All information contained in this catalog is the sole property of Strategic Operations, Inc.

Any reproduction in part or as a whole without the written permission of Strategic Operations, Inc. is prohibited.

Please note, our products and methods may be covered by one or more of the following US Patents: 8,840,403; 9,336,693; 9,865,179; 9,916,774; 9,997,087; 10,325,524; 10,360,817; 10,360,818; 10,665,135; 10,726,743; 10,847,058, 10,977,962; 11,151,902 and US Patents Pending, as well as Foreign Patents: AU 2011271667; CA 807472; CA 2894673; DE 60 2013 049 550.5; EP2589037 (DE); EP2589037 (FR); EP2589037 (UK); EP2852941 (FR); P2852941 (UK).

## CONTENTS

HUMAN WORN PARTIAL TASK SURGICAL SIMULATOR (CUT SUIT)	2
TACTICAL COMBAT CASUALTY CARE (TCCC) CUT SUIT	4
SURGICAL SIMULATION TRAINER (SST)	6
OPEN SURGICAL SIMULATION SYSTEM (OS3)	7
ADVANCED SURGICAL SKILLS PACKAGE™ (ASSP)	8
SURGICAL BLOOD PUMPING SYSTEM (SBPS)	10
MASCAL (MASS CASUALTY) SIMULATION KIT	11
BLOOD PUMPING SYSTEM (BPS)	12
6-IN 1 TCCC TRAINER (6-IN-1)	14
TCCC ADVANCED MOULAGE KIT (TAMK)	16
HYPER-REALISTIC® MOULAGE KIT (HRMK)	18
MULTI-JUNCTIONAL BLEED TRAINER (MJBT)	20
BLAST TROUSERS	22
SPECIAL EFFECTS BLOOD KIT (ARTIFICIAL TRAINING BLOOD)	23
IV SUTURE SLEEVE (IVSS)	24
IV SUTURE BLOCK	25
CASUALTY CARE RESCUE RANDY (CCRR)	26
EMERGENCY MEDICAL SUITES	28
TRAINING COURSES	30

All information contained in this catalog is the sole property of Strategic Operations, Inc.

Any reproduction in part or as a whole without the written permission of Strategic Operations, Inc. is prohibited.

Please note, our products and methods may be covered by one or more of the following US Patents: 8,840,403; 9,336,693; 9,865,179; 9,916,774; 9,997,087; 10,325,524; 10,360,817; 10,360,818; 10,665,135; 10,726,743; 10,847,058; 10,977,962; 11,151,902 and US Patents Pending, as well as Foreign Patents: AU 2011271667; CA 807472; CA 2894673; DE 60 2013 049 550.5; EP2589037 (DE); EP2589037 (FR); EP2589037 (UK); EP2852941 (FR); P2852941 (UK).





# HUMAN WORN PARTIAL TASK SURGICAL SIMULATOR (CUT SUIT)

The patented “Cut Suit” is the most realistic way to simulate the look, feel, and smell effects of severe traumatic events on a live human casualty while allowing first responders and physicians to safely perform real procedures - from the point of injury, to treatment en route, and transition of care to surgical intervention.

## PROCEDURES CURRENTLY AVAILABLE ON THE CUT SUIT

- Extremity hemorrhage control with tourniquet application, arterial ligation / clamping, internal compression
- Iliac arterial hemorrhage control
- Surgical Cricothyroidotomy
- Bilateral anterior and axillary chest needle thoracostomy
- Bilateral surgical chest-tube thoracotomy
- Suturing and stapling of skin in all locations
- Foley catheterization
- External bladder tap
- Thoracotomy and intra-thoracic exploratory surgery and hemorrhage control of gross organ structures
- Laparotomy and intra-abdominal exploration and hemorrhage control of gross organ structures
- Suturing of gross organ structures
- Anastomosis and resection
- Peripheral IV access

## UNIQUE FEATURES

- The system can be worn during even intensely physical scenarios at the Point of Injury (POI)
- The system weighs approximately 35 lbs
- Clothing, uniform, body armor, and equipment is usable
- The system allows for interaction with a live human during the emergency assessment and treatment process
- The skin and organs are user repairable
- Interchangeable organs with variable wound patterns or pathology (internal and external hemorrhaging)
- User created and customizable wounds







## TACTICAL COMBAT CASUALTY CARE (TCCC) CUT SUIT

The main goals of Tactical Combat Casualty Care (TCCC) are to treat the casualty, prevent additional casualties, and complete the mission. The TCCC Cut Suit is specially suited to accomplish these goals in training. It allows medical providers to treat the three primary causes of death on the battlefield on a live human casualty; uncontrollable hemorrhage, airway compromise, and tension pneumothorax. The frame has been streamlined to minimize the wearer profile, increasing the Hyper-Realism of any training scenario. The TCCC Cut Suit is completely user-customizable and user-repairable, minimizing costly repairs and long term reoccurring costs.

### UNIQUE FEATURES

- The system can be worn during even intensely physical scenarios at the Point of Injury (POI)
- The system weighs approximately 20 lbs
- Clothing, uniform, body armor, and equipment is usable
- The system allows for interaction with a live human during the emergency assessment and treatment process
- The skin is user repairable
- User created and customizable wounds

### PROCEDURES CURRENTLY AVAILABLE ON THE TCCC CUT SUIT

- Extremity hemorrhage control with tourniquet application, arterial ligation / clamping, internal compression (woundvoid packing)
- Surgical Cricothyroidotomy
- Bilateral anterior and axillary chest needle thoracostomy
- Bilateral surgical chest-tube thoracotomy
- Suturing and stapling of skin
- Peripheral IV access
- Sternal intraosseous IV access
- Peripheral IV medication administration





**FIELD EXPEDIENT CRICOTHYROIDOTOMY**



**CHEST NEEDLE THORACENTESIS**



**OCCUSIVE DRESSING**



**CHEST TUBE**



**HEMORRHAGE CONTROL - ARM**



**HEMORRHAGE CONTROL - LEG**





## SURGICAL SIMULATION TRAINER (SST)

The Surgical Task Trainer (SST) is an accessory to the Human Worn Surgical Cut Suit® that allows the Advanced Surgical Skills Package™ (ASSP) to drop into the abdomen and chest as a stand-alone surgical simulation system.

### CHEST INJURY PATTERN CAPABILITIES

- Pneumothorax
- Hemothorax
- Pericardial tamponade
- Right ventricular laceration
- Left lung lower lobe bleeding injury

### ABDOMINAL INJURY PATTERN CAPABILITIES

- Hemoperitoneum
- Grade IV liver injury
- Grade IV splenic injury
- Grade IV left renal injury
- Zone II expanding hematoma
- Left external iliac artery injury
- Inferior vena cava injury
- Small bowel injury
- Colon injury
- Ureteral injury

### PROCEDURES CURRENTLY AVAILABLE ON THE SST

- Needle Decompression
- Chest Tube Thoracostomy
- Resuscitative Left Anterolateral Thoracotomy
- Cross clamping of the thoracic aorta
- Pericardiotomy
- Right ventricular Pledgeted cardiorrhaphy
- Left lung wedge resection
- Internal cardiac massage
- Exploratory laparotomy
- Supraceliac aortic clamping
- Abdominal packing
- Pringle maneuver
- Mattox maneuver (left medial visceral rotation)
- Cattell-Braasch maneuver (right medial visceral rotation)
- Kocher maneuver
- Hepatorrhaphy
- Splenectomy
- Left nephrectomy
- Bowel resection with anastomosis
- Primary repair or shunting left external iliac artery injury
- Suprapubic catheter placement

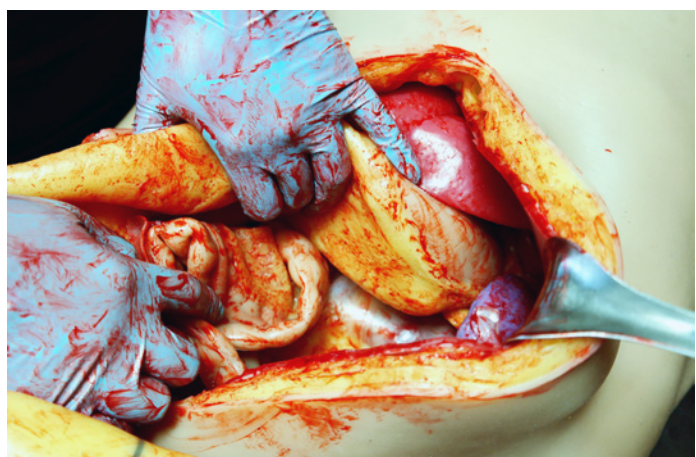


## OPEN SURGICAL SIMULATION SYSTEM

### “OUR SYSTEM... YOUR TRAINING”

Under the current surgical educational system, residents, and fellows have had significantly less hands-on experience in which they have been allowed to make independent decisions and be responsible for the consequences of those decisions. Strategic Operations™, Inc. (“STOPS”) uses proprietary and patented\* technology to bring training to the next level. The Surgical Simulation Trainer™ and Advanced Surgical Skills Packages™ (“ASSPs”) provide for our own Hyper-Realistic® training.

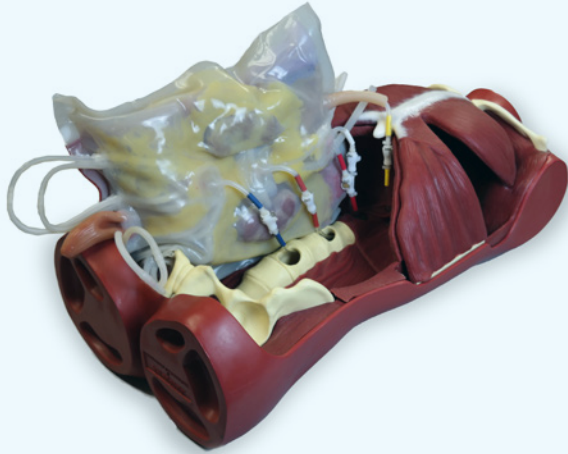
Using simulation as a training modality, instruction and education can be paused with “time outs” for illustrating critical teaching points and then restarted. Our Surgical Simulation Trainer in conjunction with our ASSP’s allow residents and fellows to experience various trauma and general surgery scenarios in a Hyper-Realistic® high-fidelity model where they willingly suspend their disbelief that they are not working on a simulation trainer, but on a real person.



#### PRODUCTS INCLUDED

- Surgical Simulation Trainer (SST)
- Advanced Surgical Skills Packages (ASSP’s)
- Surgical Blood Pumping System (SBPS)

## OS3 - ASSP - ABDOMINAL



## CUT SUIT - ASSP - LVSPKDILBW



## ADVANCED SURGICAL SKILLS PACKAGE™ (ASSP)

***Designed by surgeons, for surgeons, to teach surgeons.***

The Abdominal and Thoracic ASSPs drop into the OS3 or the patented Cut Suit and replicate various trauma and pathology scenarios, so realistic that participants willingly suspend disbelief that they are not working on a real person. Unlike surgery on a real patient, training timeouts can be taken for instruction, education, and debriefs where authentic learning occurs in simulation and can restart.

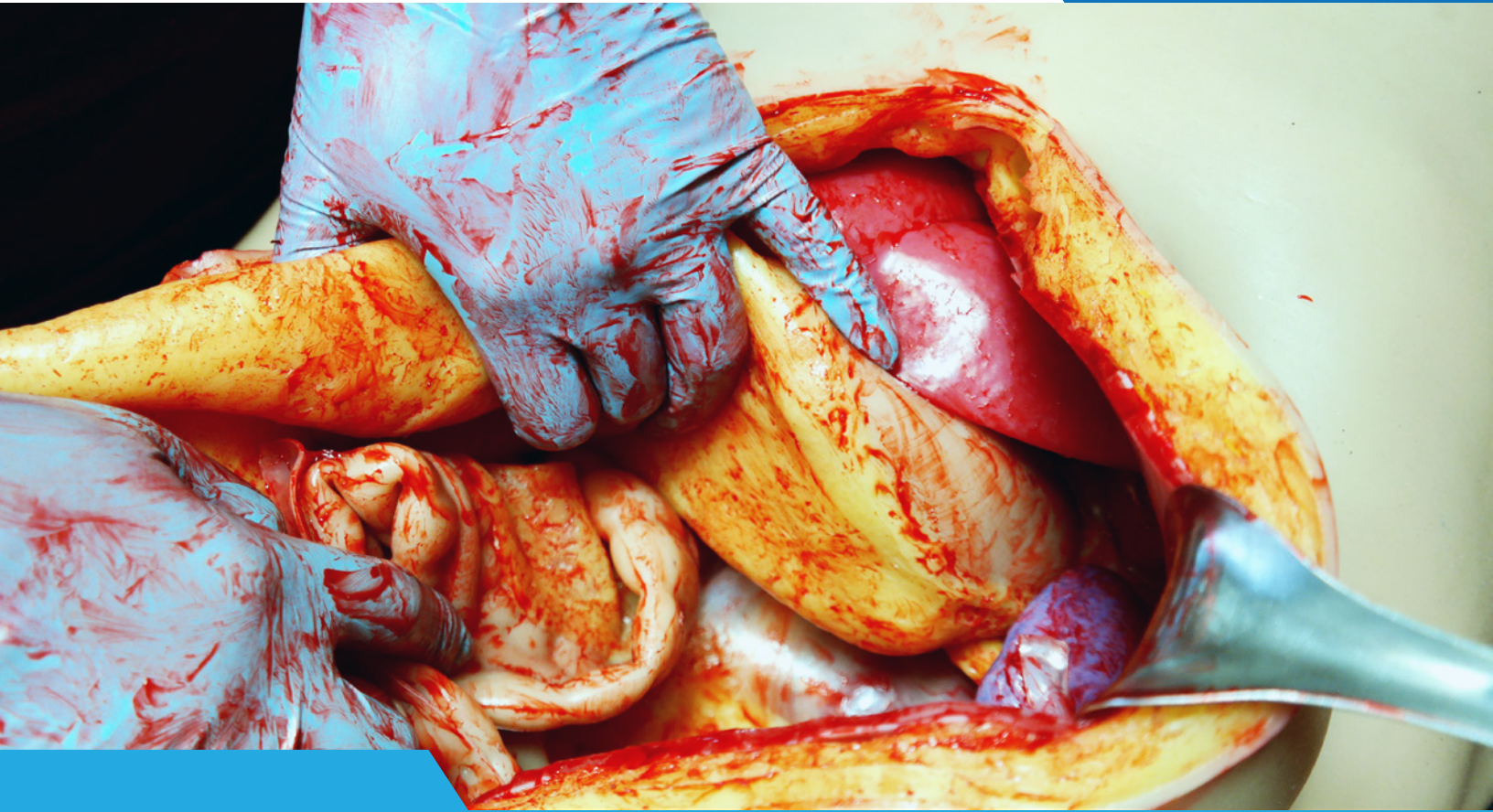
### OS3 - ASSP CONFIGURATION

ASSP PART #	DESCRIPTION
OS3-ASSP-CH	1. LUNG WEDGE RESECTION 2. CARDIAC TAMPONADE 3. CROSS-CLAMP AORTA
OS3-ASSP-ABD	LIVER, SPLEEN, KIDNEY, ILIAC, BOWEL INJURIES
OS3-SSK-MS	SST REPLACEMENT SKIN – MEDIUM SKIN TONE

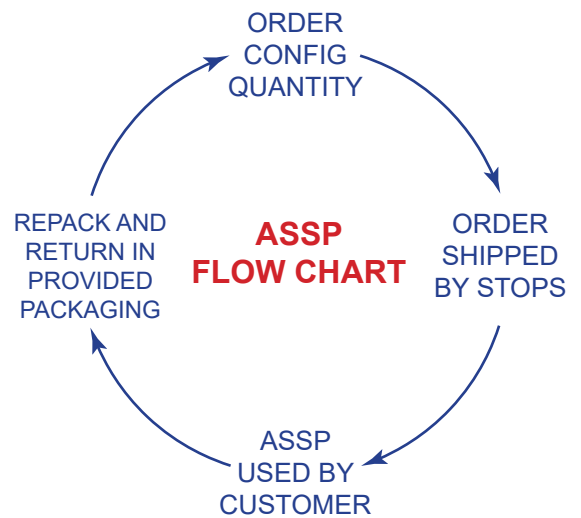
### CUT SUIT CONFIGURATION

ASSP PART #	DESCRIPTION
CS-ASSP-CH	1. LUNG WEDGE RESECTION 2. CARDIAC TAMPONADE 3. CROSS-CLAMP AORTA
CS-ASSP-LVSPBW	LIVER, SPLEEN, BOWEL INJURIES
CS-ASSP-LVSPKDILBW	LIVER, SPLEEN, KIDNEY, ILIAC, BOWEL INJURIES
CS-ASSP-ADAPTERS	ASSP ADAPTERS (SET OF 5)





ASSPs are rented and shipped in returnable cases, complete with return label, instructions, surgical blood and other components.





## SURGICAL BLOOD PUMPING SYSTEM (SBPS)

STOPS designed the SBPS to complement the performance of surgical procedures on the Cut Suit®. The ASBPS connects to the Advanced Surgical Skills Packages™ (ASSP), which surgeons use to perform trauma and elective procedures on the Cut Suit®. The system executes pauses, resets, start-overs, and stops for analysis and review for lessons learned.

### UNIQUE FEATURES:

- State of the art blood pumping system that can simulate arterial or venous blood flow.
- Analog pressure gauges that depict the pulse and indicate when blood flow has stopped.
- Adjustable blood pressure, flow and pulsatile controls.
- Two independently controlled pumps send blood through four outlets into the ASSPs
- Wall-mountable light display of real-time pump operation for all training participants to view.
- Foot-operated interrupter on/off switch of system flow & pulses
- Digital voltage-meters that gauge the viscosity of the blood mix
- Uses up to a 6-gallon standard bucket of Artificial Surgical SFX Blood.





## MASCAL SIMULATION KIT (MASS CASUALTY)

Prepare your team to skillfully manage a Mass Casualty Incident (MCI) with our MASCAL Simulation kit. Train your teams in a controlled environment to succeed during high stress events. Our kit will facilitate mastering the mindset and skills required to properly manage a Mass Casualty Incident.

### UNIQUE FEATURES:

- Provides the capability to moulage up to 40 casualties, ranging from the most severe poly traumas to walking wounded.
- Broad spectrum of wound patterns allows for the simulation of simple, or complex triage scenarios, a skill often overlooked, yet extremely critical in the management of a MCI.
- Enable instructors to rapidly change patient profiles.
- Participants can perform real world medical interventions.
- Give providers confidence when encountering real world patients.
- Human worn creates a training environment that feels real, providers react differently when their counterparts are injured.
- Can be used on low fidelity manikins if live patients are not available.
- User repairable, greatly prolonging life span of the training products.
- Designed to simulate life threatening compressible hemorrhage.

### THE MASCAL SIMULATION KIT CONTAINS:

- BPS Deluxe (2)
- BPS Basic (4)
- TAMK (Plumbed MJBT) (2)
- HRMK (1)
- LARGE PELICAN CASE 1780 (1)





## BLOOD PUMPING SYSTEM (BPS)

The Blood Pumping System (BPS) is a Hyper-Realistic® medical training system designed to simulate human life threatening hemorrhage in conjunction with the simulated human injury patient. The BPS is an innovation in patient worn bleeding simulations mimicking a small day pack. The BPS is self-contained and allows for (4) simultaneous bleeds controlled by a wireless fob. Each line can be controlled by the operator to simulate both venous and arterial bleeds. The BPS comes in a Basic and Deluxe model

### BASIC VERSION INCLUDES:

- One (1) femoral sleeve with shorts and protective guard
- One (1) brachial sleeve (without bone) and protective guard
- 2.5 gallons of blood concentrate for up to 12.5 gallons of Artificial Blood.

### DELUXE VERSION INCLUDES:

- Two (2) femoral sleeves (1 with / 1 without pants and a protective guard)
- Two (2) brachial sleeves (1 with / 1 without bone and a protective guard)
- 2.5 gallons of blood concentrate for up to 12.5 gallons of Artificial Blood.
- Blast Pants

**BY WEARING THE PROTECTIVE SHIELD, THIS ALLOWS FOR PROPER TOURNIQUET APPLICATION AND WOUND PACKING WITHOUT INJURY TO THE SIMULATED PATIENT**



**VESSEL CLAMPING OF A LIFE THREATENING BLEED**



**INTERNAL HEMORRHAGE COMPRESSION APPLIED TO AN UPPER EXTREMITY LIFE THREATENING BLEED**



**PACKING OF A LOWER EXTREMITY LIFE THREATENING BLEED**



**TOURNIQUET APPLICATION TO AN UPPER EXTREMITY LIFE THREATENING BLEED**



**TOURNIQUET APPLICATION TO A LOWER EXTREMITY LIFE THREATENING BLEED**





## 6-IN 1 TCCC TRAINER (6-IN-1)

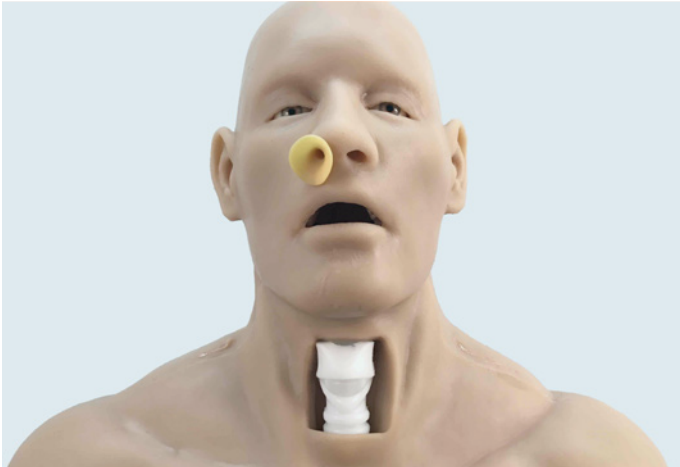
The 6-in-1 Tactical Combat Casualty Care (TCCC) Trainer is comprised of a Hyper-Realistic®, anatomically similar male head and upper torso. It is constructed with a skeleton that utilizes user-repairable body skin, neck skins, tracheas, and user-replaceable intraosseous training pucks.

### PROCEDURES AVAILABLE ON THE 6-IN-1 TCCC TRAINER INCLUDE THE FOLLOWING:

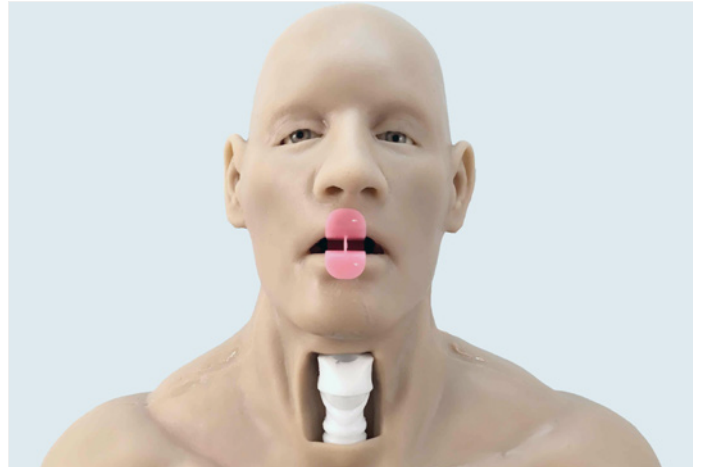
1. Nasopharyngeal Airway (NPA) Adjunct Insertion (with Oropharyngeal visual confirmation of proper measurement and placement)
2. Clearing upper airway of obstructions (i.e. finger-sweep) with Oropharyngeal airway measurement and placement
3. Surgical airways (Cricothyroidotomy, Cricothyroidcentesis, etc.)
4. Chest Needle Thoracentesis, 4 Sites, MCL, AAL
5. Sternal Intraosseous Catheter Insertion
6. Proximal Humerus Intraosseous Catheter Insertion



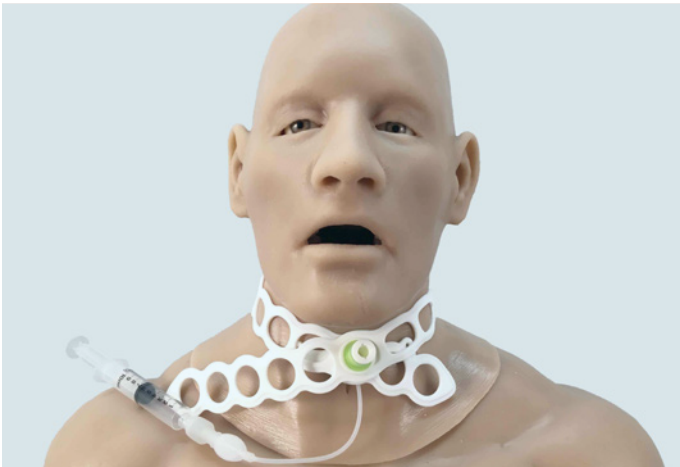




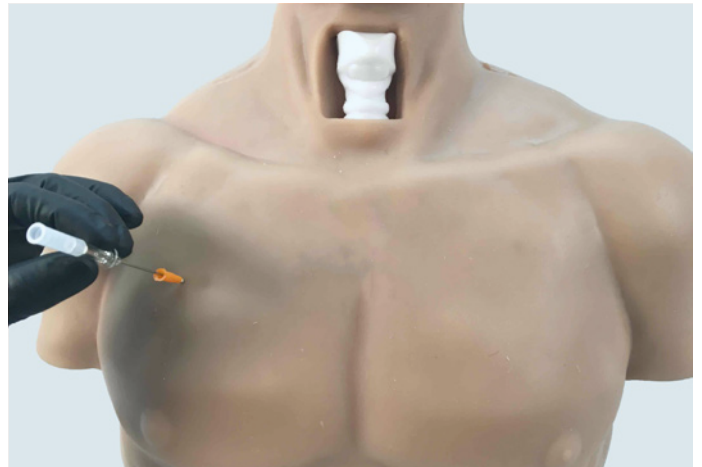
1: NASOPHARYNGEAL AIRWAY (NPA) ADJUNCT



2: CLEARING UPPER AIRWAY OF OBSTRUCTIONS



3: SURGICAL AIRWAYS



4: CHEST NEEDLE THORACENTESIS



5. STERNAL INTRAOSSEOUS CATHETER INSERTION



6. PROXIMAL HUMERUS INTRAOSSEOUS CATHETER INSERTION



## TCCC ADVANCED MOULAGE KIT (TAMK)

TAMK wearable wounds are designed to give realistic tactile and visual feedback in a multitude of training environments. These wearable wounds boost your clinical presentation by giving injuries a three-dimensional look that accepts real medical interventions. Our ruggedized wound simulators are form-fitted to be anatomically correct, whether human worn or placed on a manikin.

### SPECIAL FEATURES:

- Hyper-Realistic®
- Simulates real-world injuries
- Form Fitting
- Durable
- Comfortable
- Tactile feedback
- Expedient Application
- Versatile patient configurations
- Medium and Dark Skin Tone options

### SPECIFICATIONS:

- Item Number: TAMK-MS
- UI: Kit
- Unit weight: Approx 31 lbs
- Unit dimensions: 24.53"x19.54"x8.41"

### INCLUDED IN THE TAMK:

- Lacerated Scalp Hood w/ Hair
- Multi-Junctional Bleed Trainer
- Sucking Chest Wound + Exit Back - Short Sleeve Shirt
- 3rd Degree Burns to Chest and Back - Short Sleeve Shirt
- Arm Burn - Long Sleeve Shirt
- Radial/Ulna Fracture - Sleeve
- Femoral Wound Shorts
- Tib/Fib Closed Fracture - Lower Leg Sleeve
- 3rd Degree Burns - Lower Leg Sleeve
- Partial Left Foot Amputation Sleeve Sock
- Partial Amputate Right Hand - Glove
- Brachial Wound Sleeve
- Make-up Kit
- Removeable Case Pages



**FULL THICKNESS BURNS  
CHEST & BACK**



**MULTI JUNCTIONAL BLEED  
TRAINER**



**GUN SHOT WOUND TO CHEST**



**LACERATED SCALP**



**BRACHIAL WOUND**



**FEMORAL WOUND WITH  
LACERATION**



**RIGHT HAND PARTIAL  
AMPUTATION**



**RADIAL ULNA OPEN FRACTURE**



**LEFT FOOT PARTIAL  
AMPUTATION**



**FULL THICKNESS ARM BURNS**



**FULL THICKNESS LEG BURNS**



**CLOSED TIB FIB FRACTURE**





## THE HYPER-REALISTIC® MOULAGE KIT (HRMK)

The Hyper-Realistic® Moulage Kit provides the capabilities of a professional Special Effects Make-up Artist in one highly versatile product. The HRMK inserts hyper-realism into any training / revolution, increasing the stress inoculation factor for medical and non-medical professionals; greatly decreases the costs when implementing Hyper-Realistic® casualties into training scenarios because everything is completely reusable. All wounds are stored in one portable case for ease of use and convenience, and are completely re-usable. All wounds can be applied on any anatomical location to create the desired effect.

### THE HRMK CONTAINS:

- All required supplies needed for wound application and removal
- Step by step instructions for application, removal, cleaning, reusing, and storing of wounds
- Reusable and customizable injury reference cards to increase the realism for casualties as well as simplify wound description and application for non medical personnel
- Removable “pages” of wound patterns for ease of use and accountability

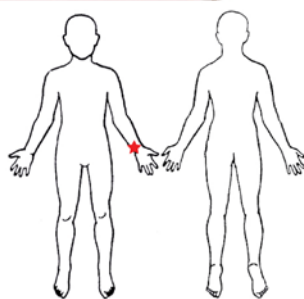
### CUSTOMIZABLE WOUND PATTERNS:

- Superficial and Deep Lacerations
- Closed and Compound Fractures
- Impaled Objects and Shrapnel Wounds
- Partial and Full Thickness Burns
- Partial Upper Amputations
- Abdominal Eviscerations
- Flail Chest and Open Thoracic Injuries
- Extraorbital Avulsions with or without Ocular Injury
- Maxiofacial Trauma with and without Dental Injuries
- Chemical, Biological, Radiological and Nuclear injuries
- Entrance and Exit Gunshot Wounds - 5.56, 7.62, and 9mm

A1 **STRATEGIC OPERATIONS**  
HYPER-REALISTIC TACTICAL TRAINING THE NEXT GENERATION

Wound Description  
 Compound Ulnar fracture  
 Deep forearm laceration

Signs & Symptoms  
 Severe pain  
 Signs of shock



(FRONT)

INJURY REFERENCE CARD FOR EACH WOUND

(BACK)



**EYE AVULSION**



**COMPOUND HUMEROUS FRACTURE**



**DORSAL HAND 1ST & 2ND DEGREE BURNS**



**SUPERFICIAL LARGE LACERATION**



**BOWEL EVISCERATION**



**GUNSHOT ENTRANCE WOUND**



**FOREARM LACERATION WITH SHRAPNEL**



**UPPER EXTREMITY 3RD DEGREE BURN**



**COMPOUND FIBULA FRACTURE**



**GUNSHOT EXIT WOUND**



**PENETRATING SHRAPNEL WOUNDS**



**SUCKING CHEST WOUND**



**2ND DEGREE PARTIAL THICKNESS BURN**



**FOREARM LACERATION**



**PARTIAL HAND AMPUTATION**



**PARTIAL FOOT AMPUTATION**



## MULTI-JUNCTIONAL BLEED TRAINER (MJBT)

Uncontrolled hemorrhaging is the number one concern for patient survivability at the point of injury. The patent pending Multi-Junctional Bleed Trainer (MJBT) is a Hyper-Realistic® medical training product designed to safely simulate hemorrhaging in some of the most challenging anatomical locations such as the carotid artery, axillary artery, and inguinal artery.

The MJBT is the unequalled training tool to perfect these life saving techniques during Hyper-Realistic® training scenarios. The MJBT enables care providers to practice and hone their wound packing skills for those anatomical areas where it is extremely difficult and nearly impossible for a medical provider to apply adequate external pressure or application of a tourniquet.

The MJBT is designed for use with the STOPS Blood Pumping Systems (BPS).





**NECK/CAROTID IDENTIFICATION**



**PACKING THE WOUND USING GAUZE**



**PACK COMPLETED UTILIZING ONE ROLL OF GAUZE**



**ARMPIT/AXILLARY IDENTIFICATION**



**PACKING THE WOUND USING GAUZE**



**PACK COMPLETED UTILIZING ONE ROLL OF GAUZE**



**GROIN/INGUINAL IDENTIFICATION**



**PACKING THE WOUND USING GAUZE**



**PACK COMPLETED UTILIZING ONE ROLL OF GAUZE**





## BLAST TROUSERS

Uncontrolled hemorrhaging is the number one concern for patient survivability at the point of injury. Many fatalities are being prevented by the prompt application of a tourniquet. However, there are many times when a tourniquet cannot be applied or may be ineffective in controlling a life threatening hemorrhage. One of the most difficult wounds to treat on the battlefield is an uncontrolled hemorrhage from an inguinal injury. The Blast Trousers will fill this training gap.

The Blast Trousers have been developed to replicate a life threatening bleed to the inguinal region. This is the most realistic simulation system to train Medics, Corpsmen, and other first responders for treatment of this injury..

The Blast Trousers are used in conjunction with the Blood Pumping System (BPS) in Hyper-Realistic® scenarios. The Blast Trousers simulate blast injuries starting above the knees that are circumferential and continue to just below the naval. The wound is above any effective tourniquet placement and must be treated by clamping the vessel or packing the wound (which holds up to two rolls of gauze) and applying direct pressure.

The Blast Trousers have a life-like appearance and feel. Utilizing the BPS, these trousers are capable of bleeding out three liters of blood in just over two minutes. The Blast Trousers are accessories that come with both versions of the Cut Suit®, the BPS Deluxe, and can be purchased separately.







## SPECIAL EFFECTS BLOOD KIT (ARTIFICIAL TRAINING BLOOD)

The Special Effects Blood Kit (Artificial Training Blood) brings the quality of Hollywood to the world of medical simulation. The Blood Kit is also competitively priced and user intuitive, ensuring maximum training fidelity concurrent with the goal of removing the word “notional” from medical training scenarios. The SFX Blood Kit is included with the purchase of medical simulation products (Surgical Cut Suit®, TCCC Cut Suit®, Hyper-Realistic Mouflage Kit, and the Blood Pumping System) and can be purchased standalone.

Utilization of realistic (artificial) blood during medical scenarios is paramount in stress inoculation training to better prepare providers and first responders to the psychological and physical rigors of their job. The SFX Blood Kit includes: one 6 gallon reconstitution bucket, one 12 ounce SFX blood splatter bottle, one 14 ounce blood spray bottle, one funnel, and one 2.5 gallon container of artificial training blood concentrate. The SFX Blood Kit has a total volume of 2.5 to 12.5 gallons, dependent on the desired viscosity.

Note: The ingredients used in this product meet with the highest standards of quality. However, as with most cosmetics, certain individuals may experience instances of sensitivity. Should this occur - discontinue use.

- **DO NOT INGEST**
- **KEEP OUT OF REACH OF CHILDREN**
- **AVOID EYE CONTACT**
- **IF EYE CONTACT OCCURS, FLUSH IMMEDIATELY WITH WATER**



## IV SUTURE SLEEVE

The IV Suture Sleeve is designed as a ruggedized human-worn venipuncture training aid. The Hyper-Realistic® skin palpates and assesses like real human tissue. The life-like skin lies over a protective shield that is puncture resistant and allows for a full range of motion. It can be used in a controlled classroom setting or austere field-training environments. Proper IV placement gives positive user feedback through blood flash. Additionally, the system can be utilized to create superficial and deep tissue lacerations that can be treated by sutures and staples. It is user-repairable and fits most body types, making it an economical training tool.

### TRAINING APPLICATIONS:

- Stress inoculation
- Venipuncture
- IV Cannulation
- IV fluid and medication administration
- Phlebotomy
- Blood draws
- Blood transfusion
- Wound cleaning
- Suturing
- Skin stapling
- Aseptic techniques
- Provide local anesthesia
- Proper practice of antiseptic technique

### COMPONENTS

- 1 User Repairable Skin
- 1 Muscle Shield
- 10 User Repairable Veins
- 20 Vein End-Caps
- 1 8oz Blood Concentrate
- 1 Repair Kit

### KEY FEATURES:

- Human-worn
- Reduce failure rates
- Durable
- Fits most body types
- User repairable components
- Life-like skin
- IV Catheter flashback
- Muscle covered protection shield
- Allows full range of motion
- Competency and Skills Assessments
- Quick and easy set-up and removal





## IV SUTURE BLOCK

The Suture Block is a Hyper-Realistic® training aid used for hands-on practical application of wound closure techniques. Create superficial or deep lacerations that can be closed by sutures or staples. Reinforce proper skin preparation with the ability to use aseptic technique, debridement, and local anesthesia prior to wound closure. The Suture Block behaves like real tissue and is comprised of multiple layers to include skin, fat, muscle, and protective shield. It is designed to be the most portable, long lasting, and highest fidelity wound closure training aid on the market.

### KEY FEATURES:

- Replicates anatomical structure of human tissue
- Highly Durable
- Create your own wounds
- User repairable components
- Evokes visual and tactile stimuli
- Comprised of proprietary Hyper-Realistic® life like skin, fat, and muscle

### TRAINING APPLICATIONS:

- Practice of anesthetic administration
- Local anesthetic administration
- Wound cleaning
- Suturing
- Stapling
- Practicing, studying, and teaching

### COMPONENTS

- 1 User Repairable Skin
- 1 Muscle Base
- 1 8oz Blood Concentrate
- Repair Kit



## CASUALTY CARE RESCUE RANDY IN ASSOCIATION WITH NASCO HEALTHCARE

The Casualty Care Rescue Randy is a full-body manikin that is uniquely designed for enhanced realistic training on the procedures that treat the 3 most preventable causes of death:

1. Massive Bleeding
2. Tension Pneumothorax
3. Airway Obstruction

**\* Compliant with TCCC/TECC scenarios \***

**\* Rugged, reliable, and Hyper-Realistic® \***

### KEY FEATURES:

- Full-body manikin with articulated joints
- Weight-distributed to mimic the human anatomy
- Holds 3-4 liters of blood
- Pumping system with regulator simulating human blood flow pressure (2-3) psi
- Manual foot operated blood pumping system allows
- 3 wounds to bleed simultaneously
- Optional Electric Deluxe blood pumping system allowing 4 wounds to bleed simultaneously
- Comes with blood powder (makes 5 gallons)
- Three (3) repairable neck skins
- Ten (10) repairable tracheas
- One (1) repair kit

## Casualty Care Rescue Randy: Life-like training solutions for real-life situations.



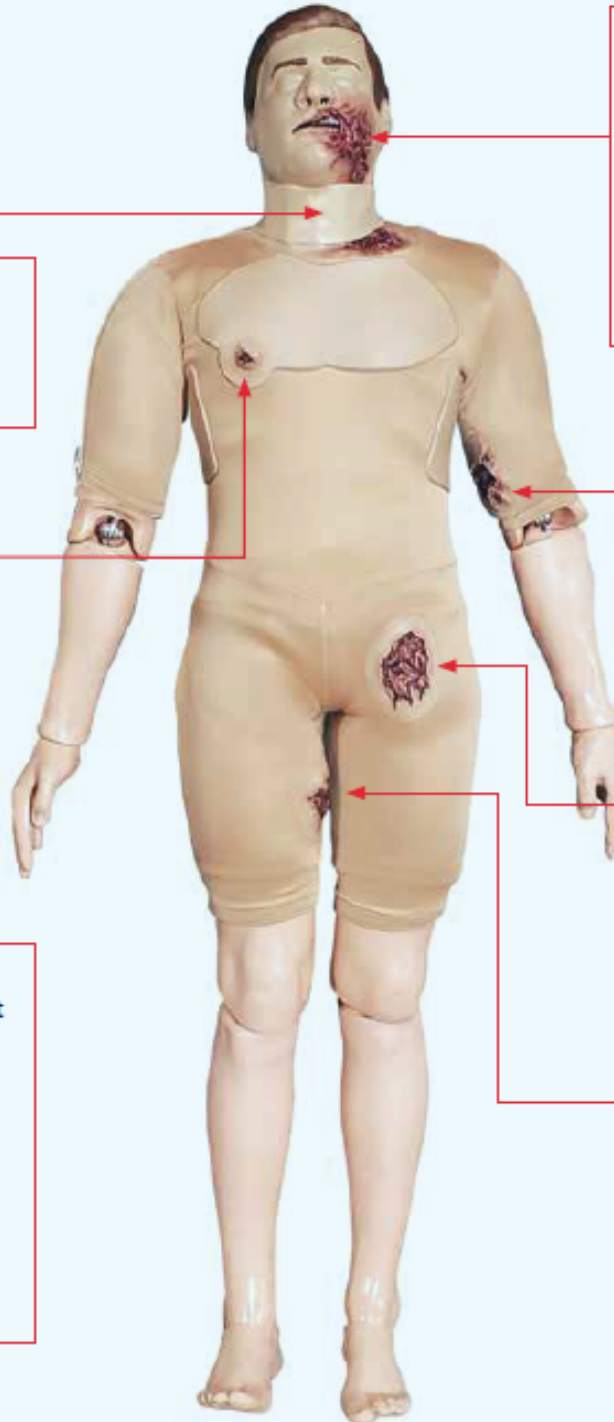
### Airway Management

- Nasopharyngeal (Nose)
- Oropharyngeal (Mouth)
- Cricothyroidotomy (Throat)



### Tension Pneumothorax

- Needle Decompression at the 4th/5th intercostal space in the anterior axillary line
  - Needle Decompression at the 2nd/3rd Intercostal space in the mid-clavicular line
- ### Penetrating Chest Wound
- Allows for occlusive dressing



### Massive Hemorrhage

- Femoral and Brachial extremity wounds
- Inguinal and Carotid junctional wounds
- Treatment Interventions  
Extremity and junctional tourniquets, wound packing and pressure bandage







## EMERGENCY MEDICAL SUITES

The STOPS Emergency Medical Suites is a facility with six modern hospital beds and two trauma resuscitation suites which may also be used for operating rooms.



### ALL PATIENT TREATMENT AREAS ARE EQUIPPED WITH:

- Modern hospital bed
- Electrocardiogram
- Non-invasive blood
- Pulse-oximetry
- Crash/Code carts and accessories.

### THE STOPS EMERGENCY MEDICAL SUITES ALSO HAS:

- Ambulance entrance
- Triage area with seating
- Nurse's station
- Procedure lighting
- Complex adjacent training areas (for simulated incidents)



All aspects of emergency department medical treatment operations can be conducted with minimal set up, logistical worries, or cleanup. Your training cadre can devote maximum effort to training.

STOPS offers a broad range of simulation services and products including but not limited to the Partial Task Human Worn Surgical Simulator (Cut Suit), professionally trained, standardized patient actors, pyrotechnic devices, special effects makeup, and a variety of proprietary casualty simulation products. "If you can imagine it, we can simulate it."



A video transmission system allows instruction staff to log in remotely to pan, tilt, zoom and record training operations for real-time feedback or after action critique and review.



A Catwalk above the training areas allow training staff and students to observe operations without interference.





## TRAINING COURSES

STOPS is proud to offer a number of educational courses. For more information on availability and pricing on the courses listed below, please visit [www.strategic-operations.com](http://www.strategic-operations.com)

**Tactical Emergency Casualty Care for Law Enforcement Officers and First Responders (NAEMT TECC-LEO)**

**Tactical Emergency Casualty Care (TECC)**

**Tactical Medicine Technician (TMT)**

**Tactical Combat Casualty Care (TCCC)**

**Hyper-Realistic Moulage Kit Basic Course**

**Hyper-Realistic Moulage Kit Advanced Course**



## USA OFFICE

STRATEGIC OPERATIONS  
4705 RUFFIN RD,  
SAN DIEGO,  
CA, 92123

(858) 244 0559  
info@e-stops.com  
www.strategic-operations.com

## FIND US HERE

[www.instagram.com/strategic\\_operations](http://www.instagram.com/strategic_operations)

[twitter.com/strategicops](https://twitter.com/strategicops)

[www.facebook.com/StrategicOperations](http://www.facebook.com/StrategicOperations)

<https://www.youtube.com/c/strategicoperationsinc>

## CANADA OFFICE

ST/OPS Tactical Training Canada, ULC  
614 17th Street S.W.  
Medicine Hat,  
Alberta T1A 4X7

403.529.2255  
support@stopscan.ca  
www.stopscan.ca

## FIND US HERE

[www.instagram.com/stopscanada](http://www.instagram.com/stopscanada)

[www.facebook.com/stopscanada](http://www.facebook.com/stopscanada)



**STOPS USA**



**STOPS CANADA**