



## BLOOD PUMPING SYSTEM (BPS)

The Blood Pumping System (BPS) is a Hyper-Realistic® medical training system designed to simulate human life threatening hemorrhage in conjunction with the simulated human injury patient. The BPS is an innovation in patient worn bleeding simulations mimicking a small day pack. The BPS is self-contained and allows for (4) simultaneous bleeds controlled by a wireless fob. Each line can be controlled by the operator to simulate both venous and arterial bleeds. The BPS comes in a Basic and Deluxe model

### BASIC VERSION INCLUDES:

- One (1) femoral sleeve with shorts and protective guard
- One (1) brachial sleeve (without bone) and protective guard
- 2.5 gallons of blood concentrate for up to 12.5 gallons of Artificial Blood.

### DELUXE VERSION INCLUDES:

- Two (2) femoral sleeves (1 with / 1 without pants and a protective guard)
- Two (2) brachial sleeves (1 with / 1 without bone and a protective guard)
- 2.5 gallons of blood concentrate for up to 12.5 gallons of Artificial Blood.
- Blast Pants

**BY WEARING THE PROTECTIVE SHIELD, THIS ALLOWS FOR PROPER TOURNIQUET APPLICATION AND WOUND PACKING WITHOUT INJURY TO THE SIMULATED PATIENT**



CONTACT US DIRECTLY  
**(858) 244-0559**

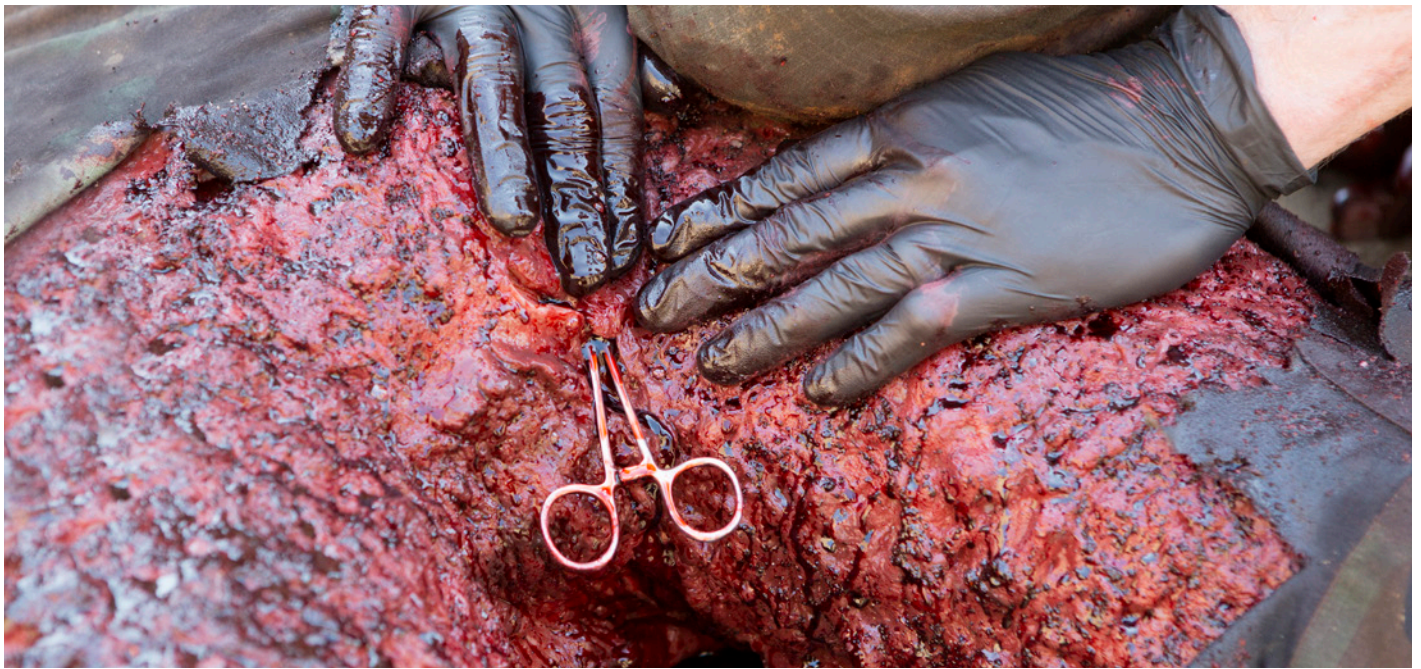


4705 RUFFIN RD  
SAN DIEGO, CA  
92123



[WWW.STRATEGIC-OPERATIONS.COM](http://WWW.STRATEGIC-OPERATIONS.COM)





**VESSEL CLAMPING OF A LIFE THREATENING BLEED**



**INTERNAL HEMORRHAGE COMPRESSION APPLIED TO AN UPPER EXTREMITY LIFE THREATENING BLEED**



**PACKING OF A LOWER EXTREMITY LIFE THREATENING BLEED**



**TOURNIQUET APPLICATION TO AN UPPER EXTREMITY LIFE THREATENING BLEED**



**TOURNIQUET APPLICATION TO A LOWER EXTREMITY LIFE THREATENING BLEED**



**CONTACT US DIRECTLY  
(858) 244-0559**



**4705 RUFFIN RD  
SAN DIEGO, CA  
92123**



**WWW.STRATEGIC-OPERATIONS.COM**

